



# OzSpy 07 Series Custom Built Covert Camera

## Quick Reference Guide

### INTRO

This system uses state of the art Wi-Fi video module to allow streaming of your video of up to 1080p (depending on your phone's capability) and back up recordings of 1080p to the on-board memory.

All of our custom built systems are handmade and tested to the highest quality standards. Please read this setup guide carefully to ensure a simple setup and operation of the unit.

The 07 series has some of the best features we have seen in any covert camera including but not limited to:

- Works with most Onvif DVRs or NVRs for integration into existing systems
- Works independently via LAN connection or Wi-Fi to PC or Smart Device
- Full featured with email alerts, motion detection and 1080p full HD recording
- Wide angle lens for great coverage
- 0.05 lux low light capability for those slightly darker areas other cameras won't work without IR
- Records to SD card, Phone, Tablet, PC or any other smart device
- Runs on 12v for permanent use with no worries about flat batteries
- Fantastic web control panel with full control of system and configuration

### THE HARDWARE

The hardware used in this system is delicate high sensitivity electronics so we strongly recommend that you do not touch or handle the internal module or constantly change the SD card as excessive handling may cause issues.

## FIRST USE

Ensure you are connected to 12Volt power and that you have a CAT5 (internet cable) cable connected from your modem to the device.



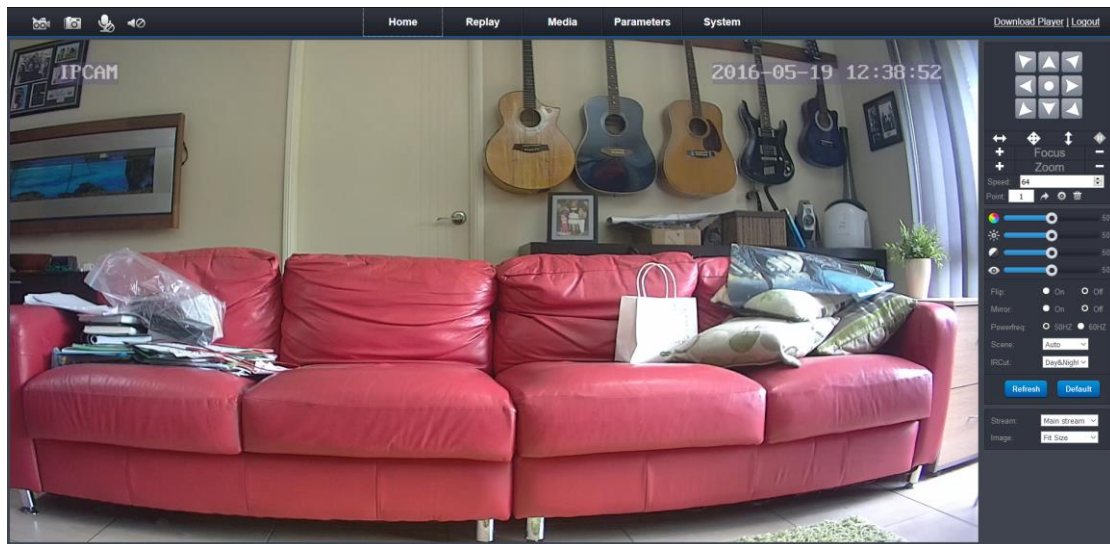
Type this into your browser (Firefox or IE) <http://192.168.1.136/> in the search bar and click enter

That address will take you to this page. If your network is set on a different range like 10.1.1.0 or similar you may need to adjust your network temporarily to access the device or when purchasing from us request it set to a particular range.

A screenshot of a web interface for a device. At the top, there is a camera view showing a dome camera. Below the camera view, there are login fields: "User name:" with the text "admin" entered, "Password:" with five dots entered, "Language:" with a dropdown menu showing "English", and "Stream:" with a dropdown menu showing "Main stream". To the right of the "Stream:" dropdown, there are links for "Download" and "Player". At the bottom, there is a checkbox for "Auto Login" and a blue "Login" button.

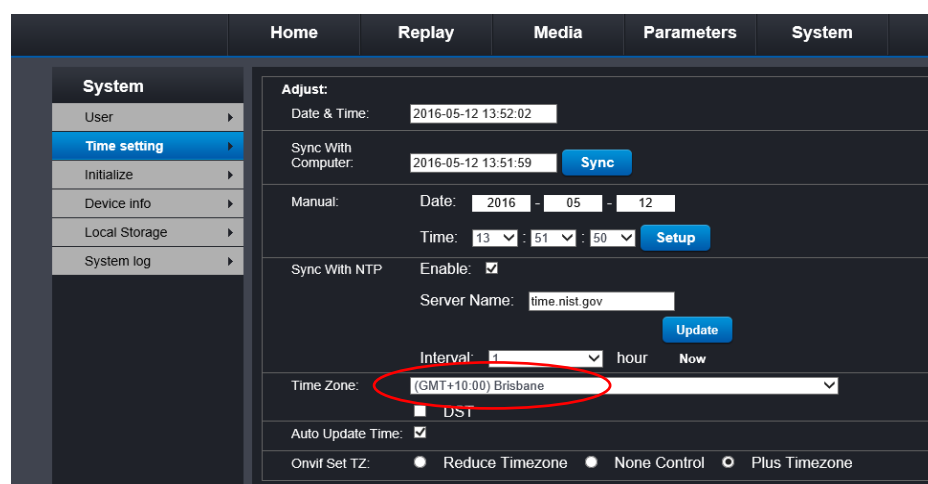
Click on “Download Player” in the top right corner of the screen and install the player. You will need to save the player to your computer and install it. Change the language to English using the dropdown menu then enter “admin” as the username and password and click login.

Once you are connected properly you should be able to see what the camera sees live with a slight delay of a second or two.



## SETTING THE TIME

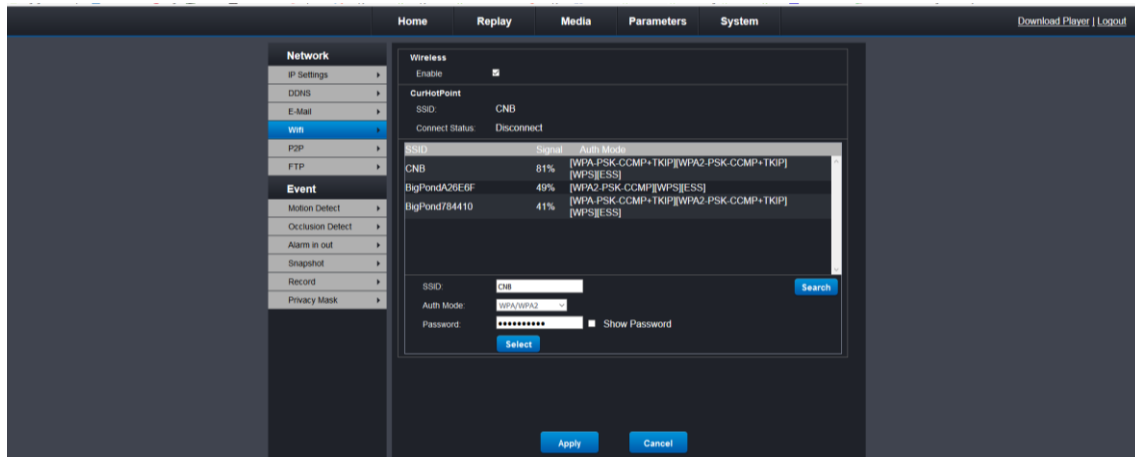
Go to System>Time Setting and adjust accordingly ensuring you set the correct time zone to enable automatic time updates.



## CONNECT TO WI-FI

To connect to your Wi-Fi go to Parameters>Wifi and enable this feature. The system will scan the local Wifi connections available, select yours, add the password then connect.

Now you can unplug the LAN cable and your connection should be solid and the camera is ready to be placed in the final position.



## CONNECT TO P2P

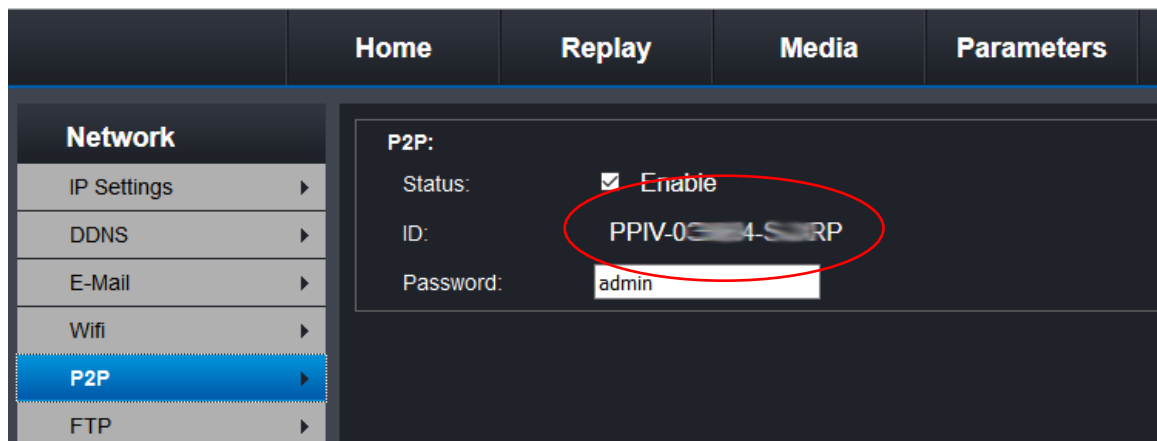
Firstly download the correct app.

P2PWIFICAM2 for iPhone

P2PWIFICAM for Android

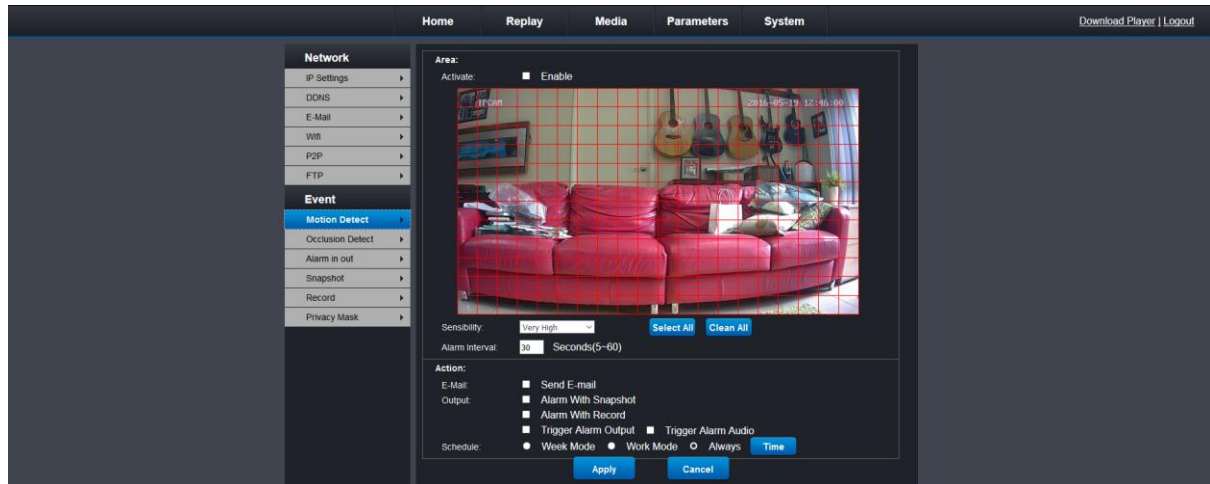


Go to Parameters>P2P and get your unique P2P ID then go to app and add a new device. Use your P2P ID as requested by app and follow the instructions.



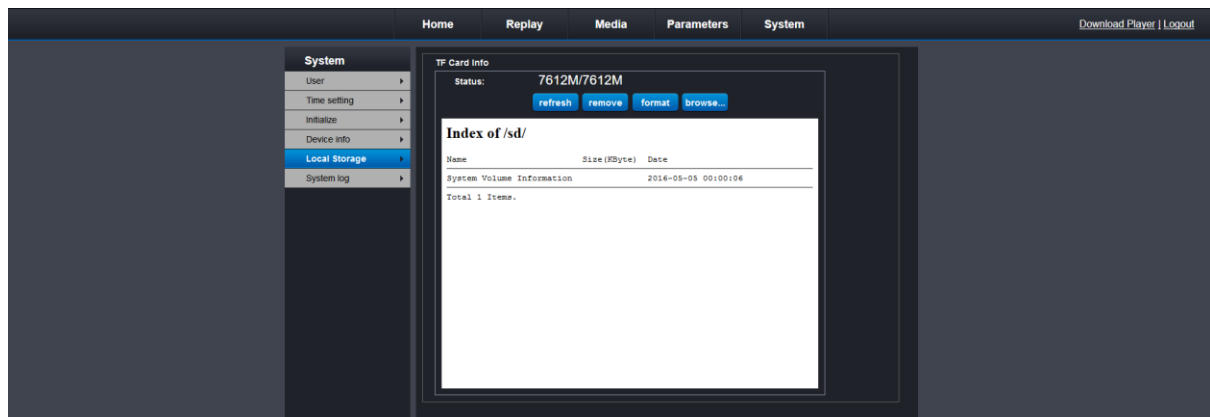
## MOTION DETECT

Navigate to Parameters>Motion Detect for the advanced motion detection options which include email alerts, motion recording etc.



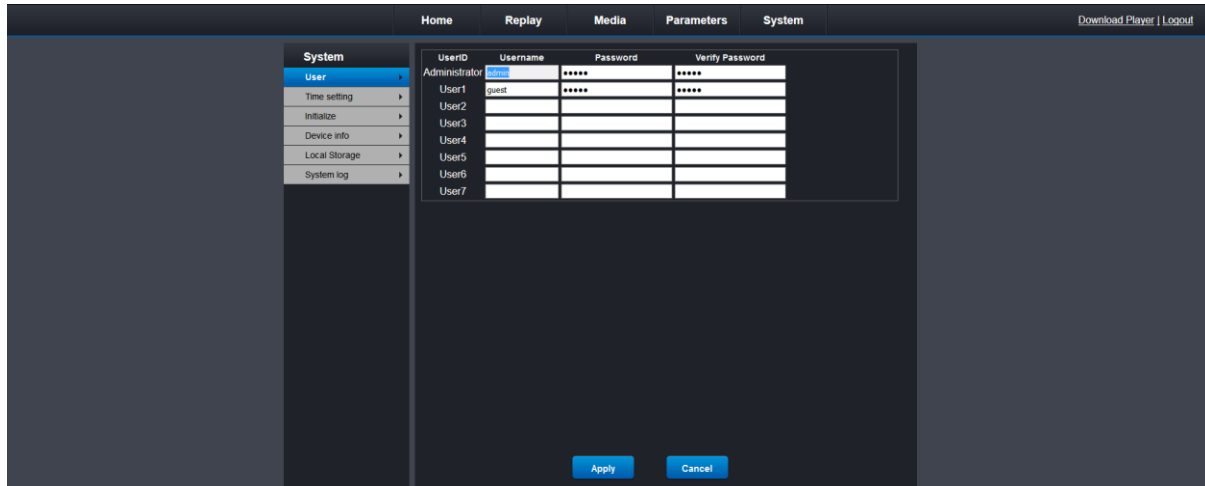
## ACCESS ON BOARD RECORDINGS

Navigate to System>Local storage where you can manage the SD card, view recording, etc.



## ASSIGN ADDITIONAL USERS

Navigate to System>User where you can manage addition users that you may want to grant temporary access (or permanent) to the system. You can also change your password here, however please ensure you write down your password as if you forget it the system will not be repairable.



The screenshot shows the OZSpy web interface. At the top, there are tabs: Home, Replay, Media, Parameters, and System. The 'System' tab is selected. On the left, a sidebar menu shows 'System' expanded with 'User' selected. The main area displays a table for managing users.

UserID	Username	Password	Verify Password
Administrator	admin	*****	*****
User1	guest	*****	*****
User2			
User3			
User4			
User5			
User6			
User7			

At the bottom of the table, there are two buttons: 'Apply' and 'Cancel'.

## ADDITION FEATURES AND SUPPORT

As you work your way through the device and really get to know it you will see many more features and capabilities that are not covered by this quick guide.

There is no danger to the unit by experimenting with any setting (except changing password and losing it)

For addition support please go to [www.ozspysupport.com](http://www.ozspysupport.com) and lodge a ticket. One of our support team will then contact you to offer assistance.

Thank you for purchasing our 07 series custom camera, we hope you love it as much as we do.